

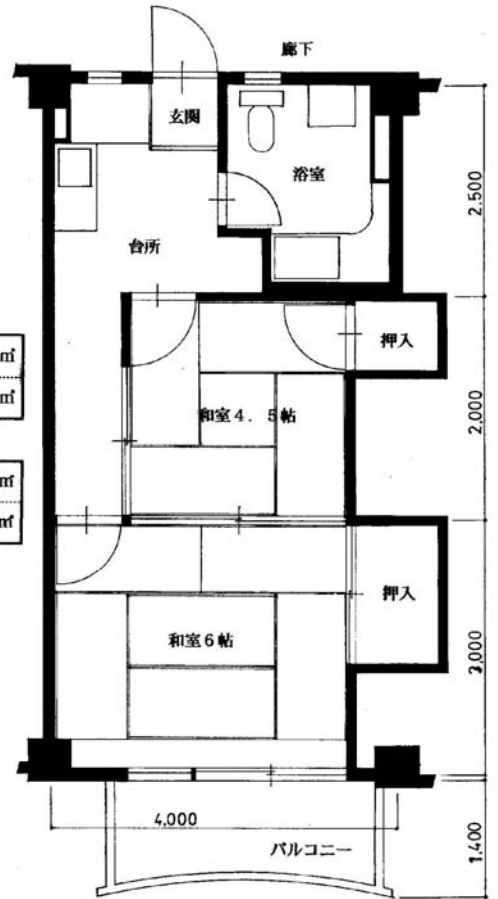
1～3号棟平面図

←面積表 (1～3号棟)

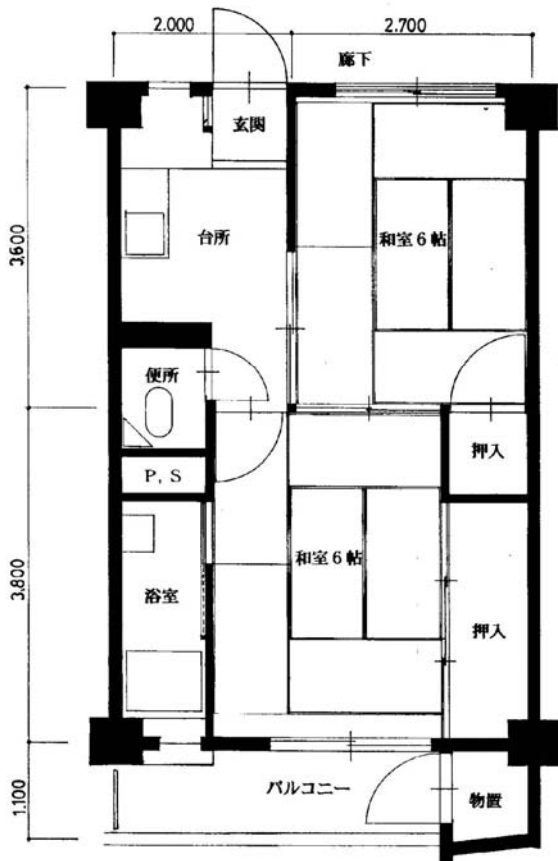
占有面積	$5.7 \times 6.6 = 37.62 \text{ m}^2$
バルコニー	$4.72 \times 1.0 = 4.72 \text{ m}^2$

→面積表 (5～8号棟)

占有面積	$4.0 \times 8.1 = 32.4 \text{ m}^2$
バルコニー	$3.0 \times 1.0 = 3.0 \text{ m}^2$



6～7号棟平面図



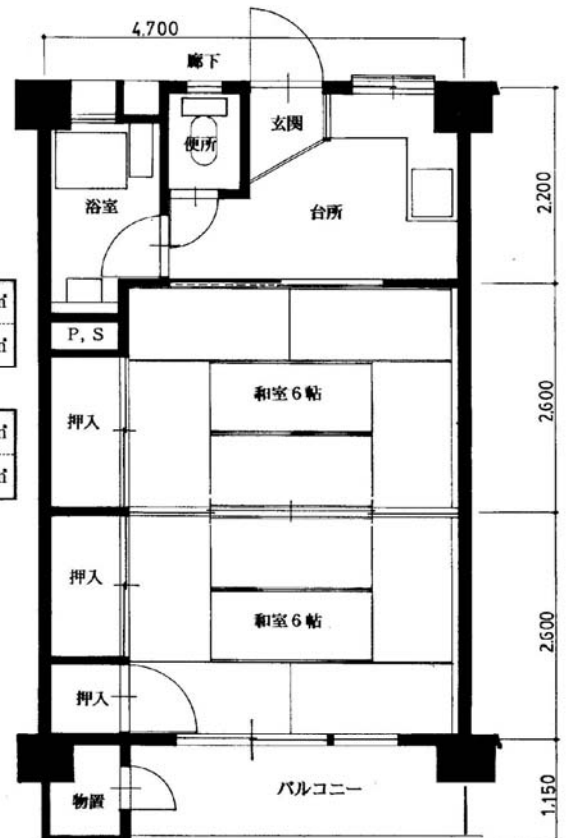
10～13号棟平面図

←面積表 (10～13号棟)

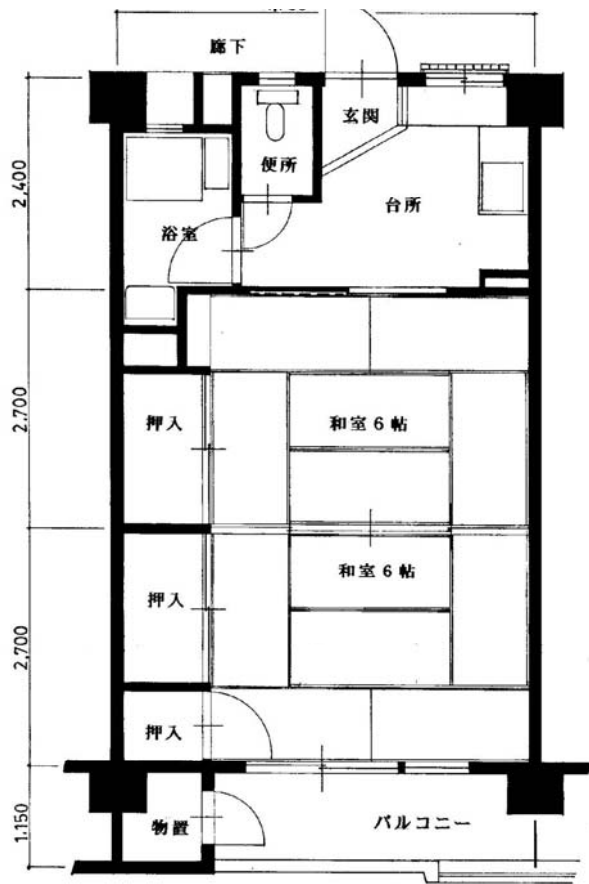
占有面積	$4.7 \times 7.4 = 34.78 \text{ m}^2$
バルコニー	$4.7 \times 1.1 = 5.17 \text{ m}^2$

→面積表 (14～16号棟)

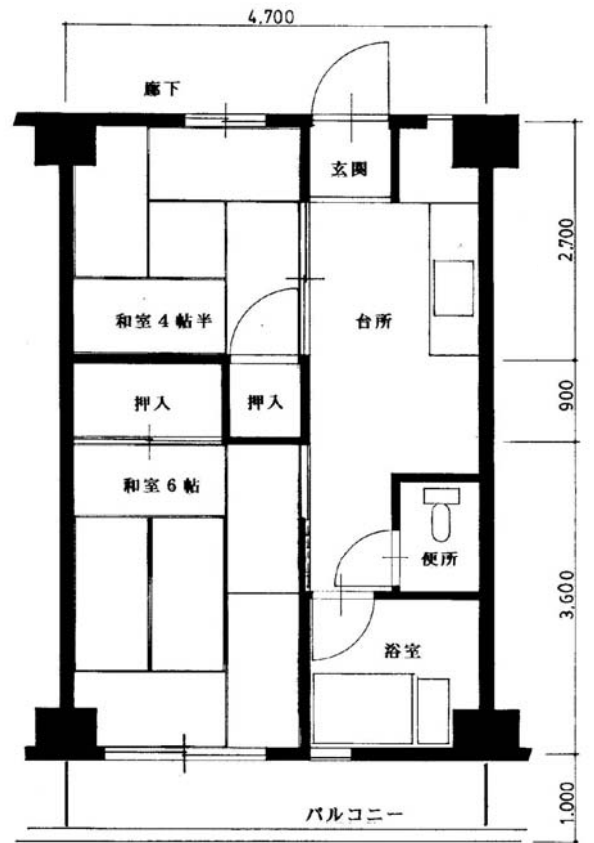
占有面積	$4.7 \times 7.4 = 34.78 \text{ m}^2$
バルコニー	$4.7 \times 1.15 = 5.40 \text{ m}^2$



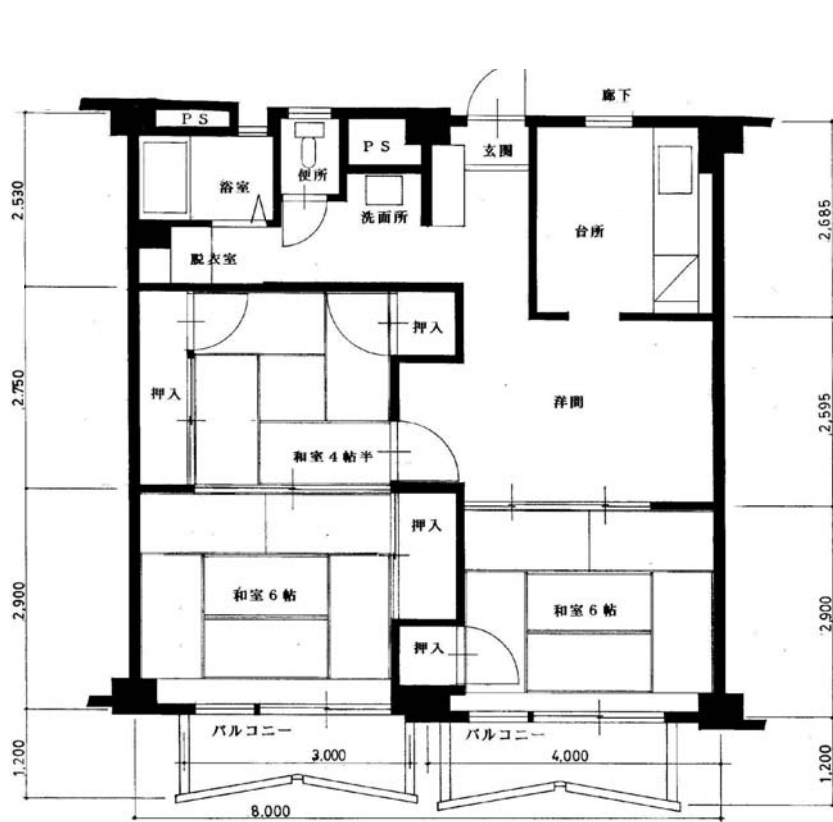
14～16号棟平面図



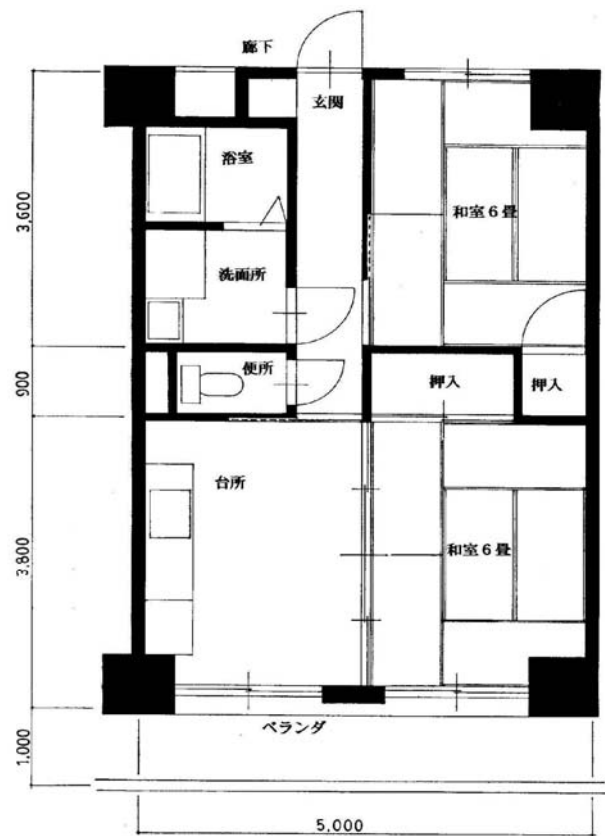
17号棟平面図



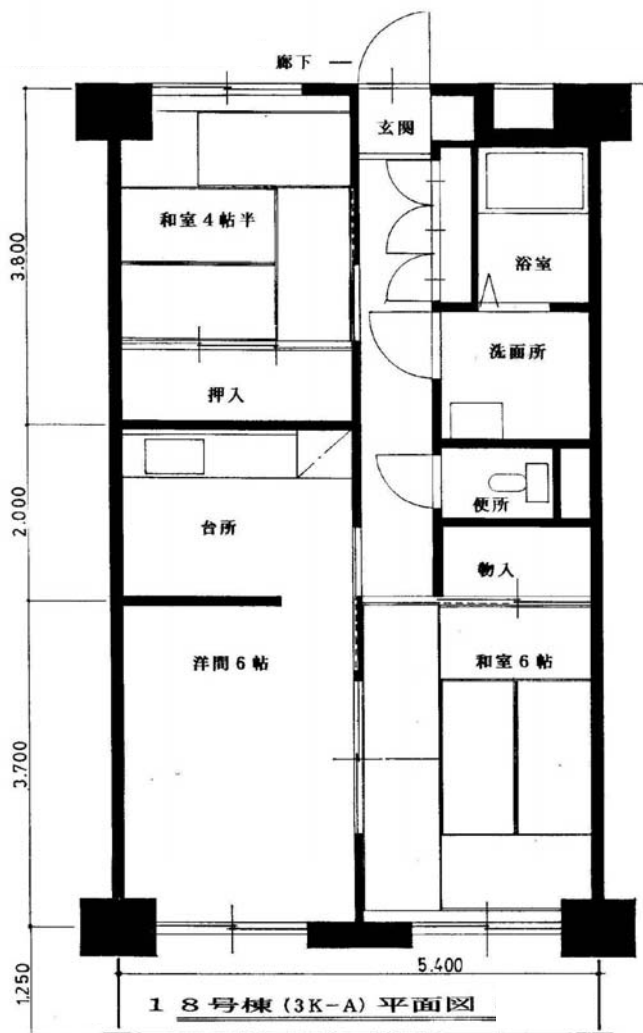
19号棟平面図



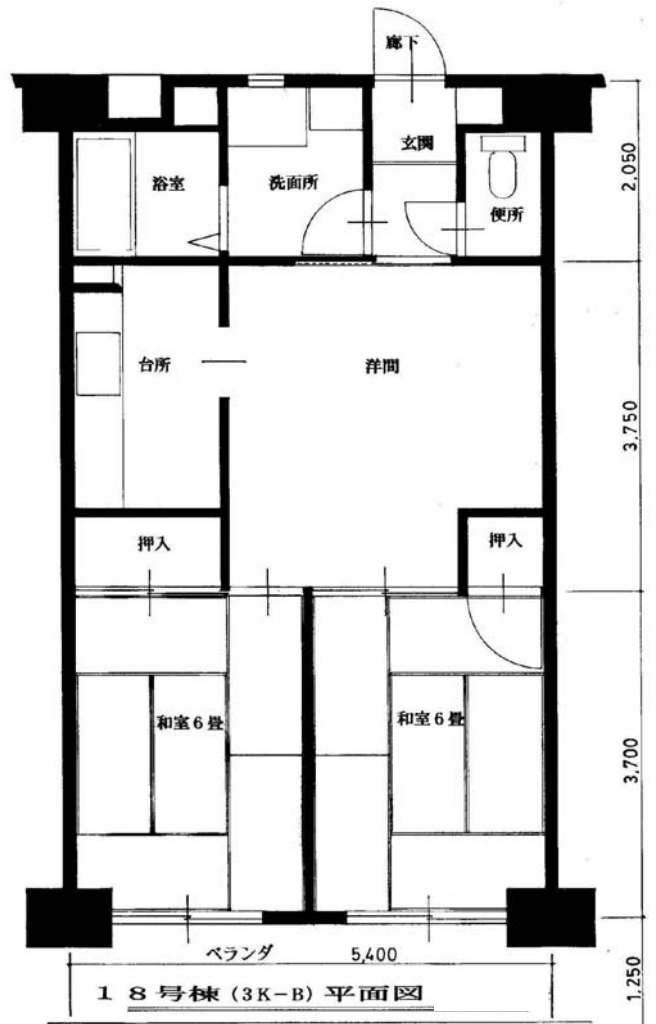
5・8号棟平面図



18号棟 (2DK-A) 平面図



18号棟 (3K-A) 平面図



18号棟 (3K-B) 平面図